



**NETHERLANDS INITIATIVE  
FOR EDUCATION RESEARCH**

## **Building bridges**

**EIPPEE 2016**

**'NRO activities for teachers and  
policymakers to improve the links  
between research and education'**

**Marion Stenneke en Rosanne Zwart  
November 2016**





[https://padlet.com/r\\_c\\_zwart/EIPPEENRO](https://padlet.com/r_c_zwart/EIPPEENRO)

Share your comments and questions  
During the session

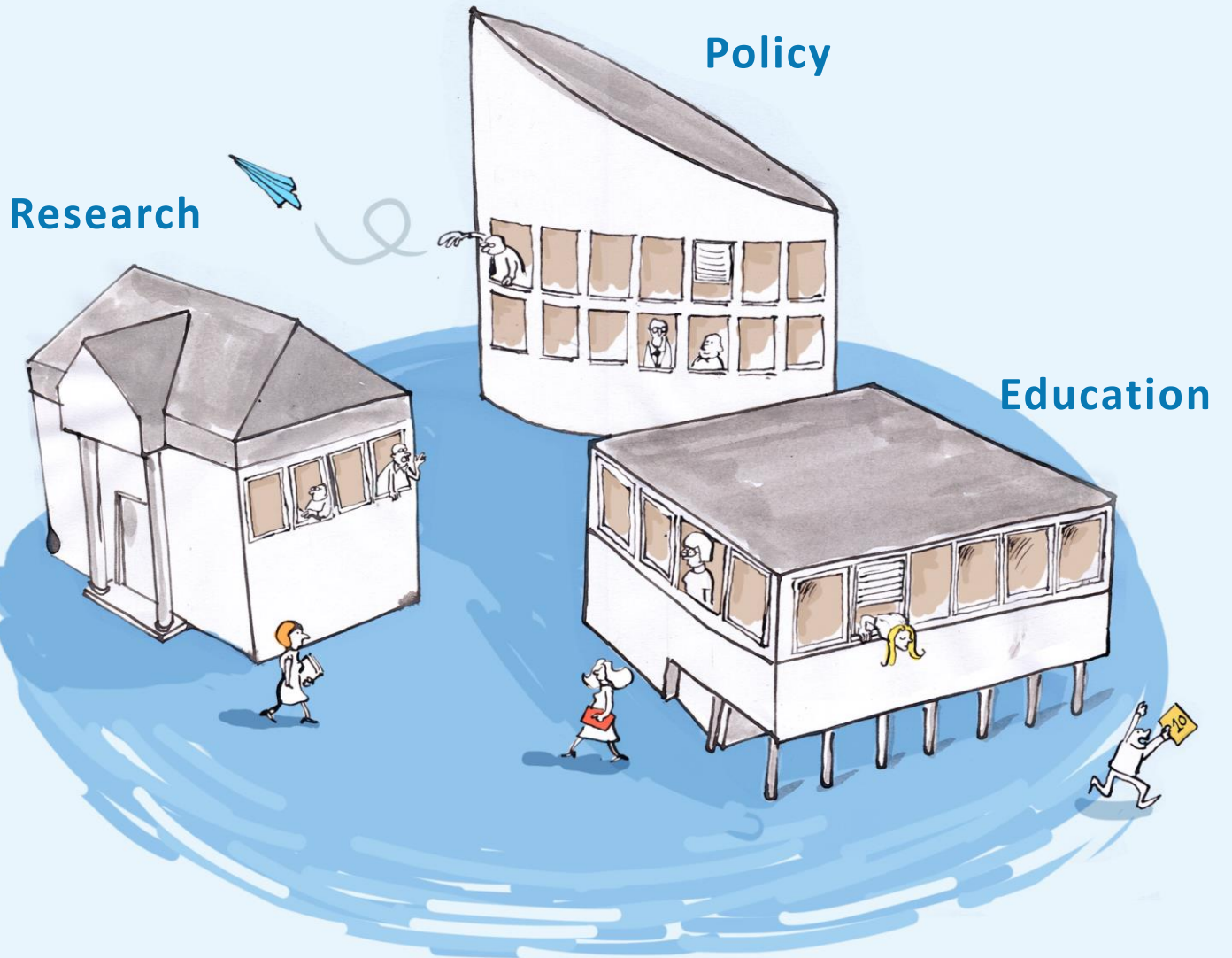


NETHERLANDS INITIATIVE  
FOR EDUCATION RESEARCH



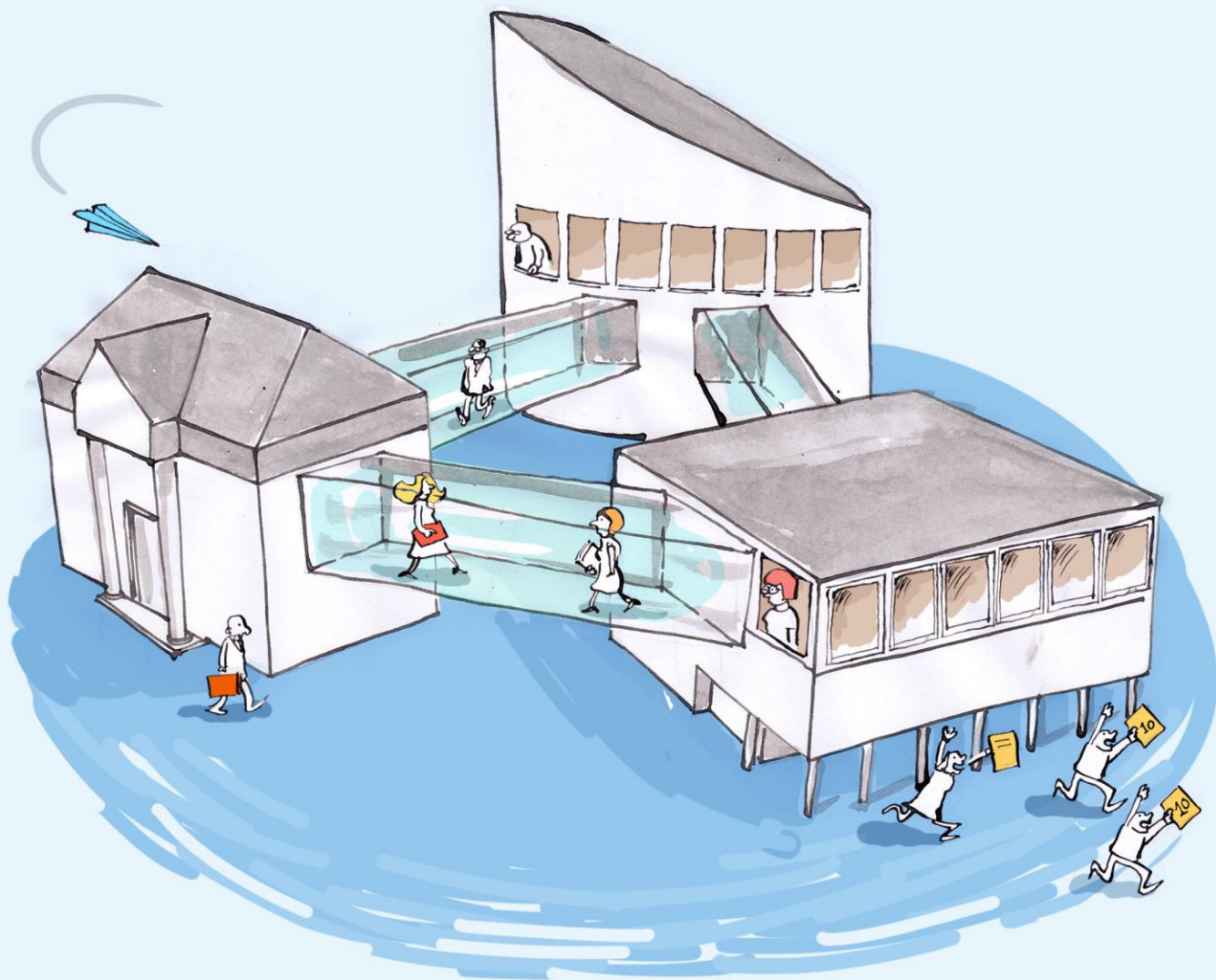
**NRO**

NETHERLANDS INITIATIVE  
FOR EDUCATION RESEARCH



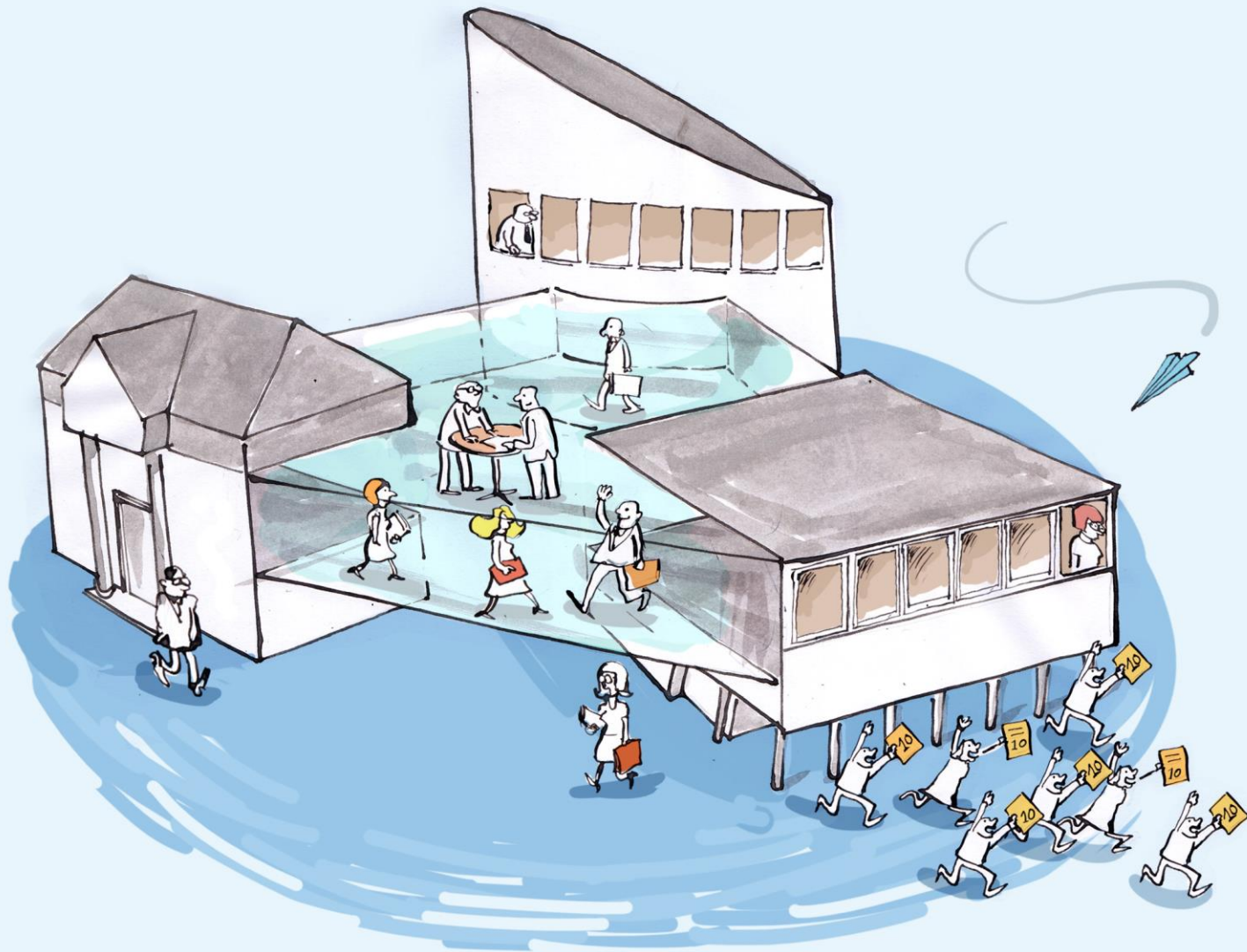
**NRO**

NETHERLANDS INITIATIVE  
FOR EDUCATION RESEARCH



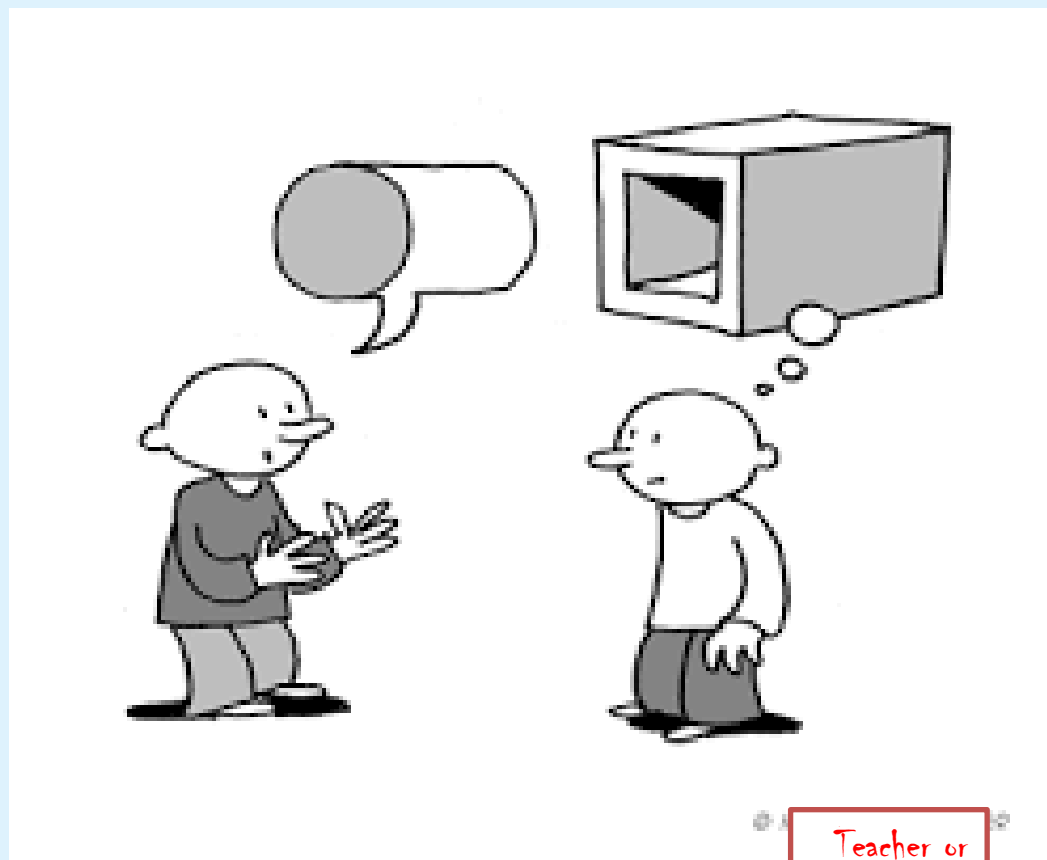
**NRO**

NETHERLANDS INITIATIVE  
FOR EDUCATION RESEARCH



**NRO**

**NETHERLANDS INITIATIVE  
FOR EDUCATION RESEARCH**



Researcher

Teacher or  
Policymaker



**NRO**

NETHERLANDS INITIATIVE  
FOR EDUCATION RESEARCH



**advice**

**Teaching method**

**education**

**Personal values**

**RESEARCH**

**experience**

**mathematical equations on the chalkboard:**

- $y' = u \frac{dv}{dx} + v \frac{du}{dx}$
- $u \frac{dv}{dx} + v \frac{du}{dx} + \frac{1-2x}{x^2} uv = 1$
- $u \left[ \frac{dv}{dx} + \frac{1-2x}{x^2} v \right] + v \frac{du}{dx} = 1$
- $\frac{dv}{dx} + \frac{1-2x}{x^2} v = \frac{1}{u}$
- $\frac{1}{v} dv = \frac{1}{x^2} dx + \frac{1}{x} dx$
- $\int \frac{1}{v} dv = \int \left( \frac{1}{x^2} + \frac{1}{x} \right) dx$
- $\ln |v| = -\frac{1}{x} + \ln |x| + C$
- $v = x e^{-\frac{1}{x} + C} = x e^{-\frac{1}{x}} e^C = k x e^{-\frac{1}{x}}$
- $y = u v = x^2 \cdot k x e^{-\frac{1}{x}} = k x^3 e^{-\frac{1}{x}}$
- $3 \log_7 x + \log_7 b - (x+2) \log_7 3$
- $\log_7 \sqrt[5]{b} - \log_7 3^{(x+2)}$
- $\log_7 3^{(x+2)}$
- $3x^3 - 5x^2 + 2x = 0$
- $x \cdot (3x^2 - 5x + 2) = 0$
- $x = 0 \vee 3x^2 - 5x + 2 = 0$
- $x_1 = 0 \vee x_{2,3} = \frac{5 \pm \sqrt{25 - 24}}{6}$
- $x_1 = 0 \quad x_2 = 1 \quad x_3 = \frac{2}{3}$
- $\sin^2 x + \cos^2 x = 1$
- $\operatorname{tg} x = \frac{\sin x}{\cos x}$
- $\cot x = \frac{\cos x}{\sin x}$
- $\operatorname{tg} x \cot x = 1$
- $\sin 2x = 2 \sin x \cos x$
- $\log_A(x) + \log_A(y)$
- $\log_A(x)$



**NRO**  
NETHERLANDS INITIATIVE  
FOR EDUCATION RESEARCH

# NRO Activities for teachers and policymakers

Funding research by joint initiatives from researchers and teachers

Knowledge Portal for education research

Online toolbox for teachers (Leraar24)

Journal for teachers (Didactief)

Open Access for teachers

Question and Answer counter for teachers (Knowledge Roundabout)

Conferences for teachers about research results

Leaflets for teachers about research results

Regional workplaces between research institutions, teacher educators and schools



NETHERLANDS INITIATIVE  
FOR EDUCATION RESEARCH



# Knowledge Portal: access to 15 databases with easy to read summaries of education research

**NRO KENNISPORTAL**  **ONDERWIJS**



**NRO**

NETHERLANDS INITIATIVE  
FOR EDUCATION RESEARCH

**DIDACTIEF**

— OPINIE EN ONDERZOEK VOOR DE SCHOOLPRAKTIJK

**Leraar24**



**4 W**

**Onderwijs Bewijs**  
Wat werkt echt?

**SCHOOL AAN ZET**

**Onderzoek Onderwijs**  
Kritisch blogcollectief van docenten en onderzoekers

**nivoz** onderwijs tact en leiderschap

 wij-leren.nl

**APS** leren inspireren

**KPC Groep**

**Lezen**  
STICHTING LEZEN

Nederlands  
**Jeugd**  
instituut



**EDventure**  
vereniging van onderwijs

**ecbo**

expertisecentrum  
beroepsonderwijs



## Leraar24

### Thematic files: reviews with practical guides

#### *Thematic files*

#### **Dossier: Spelling PO**

KNOW • 19 januari 2013 PO

Onder 'spelling' verstaan we de wijze waarop we een woord moeten schrijven. Een goede spellingvaardigheid wordt maatschappelijk hoog gewaardeerd. Er wordt gebruikgemaakt van strategieën om woorden op de juiste manier op te kunnen schrijven. Het spellingproces verloopt steeds meer automatisch, waardoor de aandacht meer en meer gericht kan worden op de inhoud van wat er geschreven moet worden.

Wat weten we?

Dat betekent voor de praktijk

Handreikingen

1

2

3

*What do we know*

*What does  
this mean*

*Practice  
guide*

**NRO**

NETHERLANDS INITIATIVE  
FOR EDUCATION RESEARCH

## Magazine for teachers about education research



**NRO**

NETHERLANDS INITIATIVE  
FOR EDUCATION RESEARCH





Online Question and Answer Corner  
for teachers and policymakers  
[www.kennisrotonde.nl](http://www.kennisrotonde.nl)



**NRO**

NETHERLANDS INITIATIVE  
FOR EDUCATION RESEARCH

## Conferences about research to discuss results with teaching staff, policymakers and researchers



*Meeting in the gym of a secondary school about the effect of physical exercise on school performance with state secretary and director of sector council*

**NRO**

NETHERLANDS INITIATIVE  
FOR EDUCATION RESEARCH



# Comments and questions

Please write your comments on padlet.com  
[https://padlet.com/r\\_c\\_zwart/EIPPEENRO](https://padlet.com/r_c_zwart/EIPPEENRO)

Questions or more information:

Marion Stenneke en Rosanne Zwart

[m.stenneke@nwo.nl](mailto:m.stenneke@nwo.nl)

[r.zwart@nwo.nl](mailto:r.zwart@nwo.nl)

[www.nro.nl/en/](http://www.nro.nl/en/)

**NRO**

NETHERLANDS INITIATIVE  
FOR EDUCATION RESEARCH